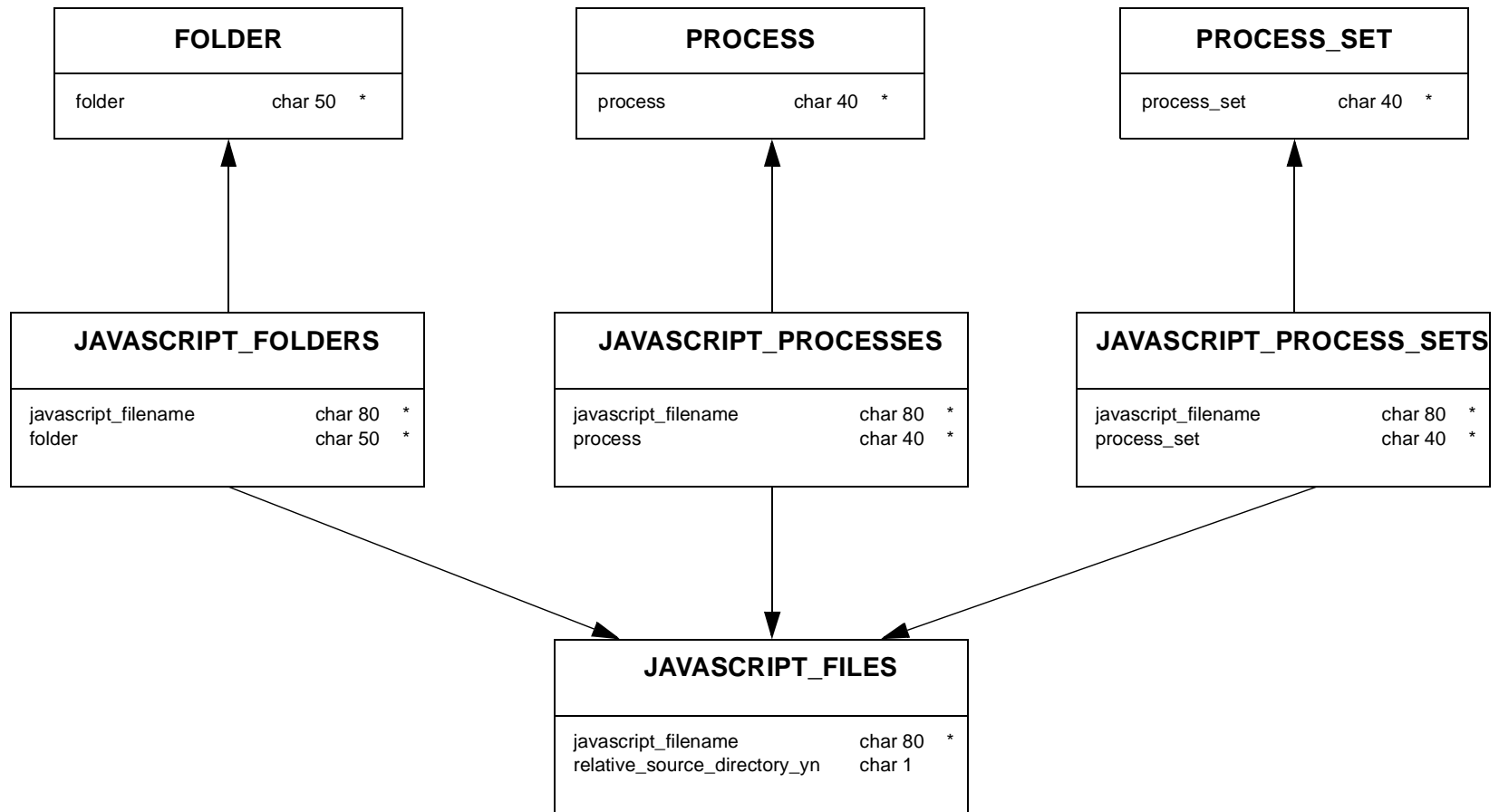
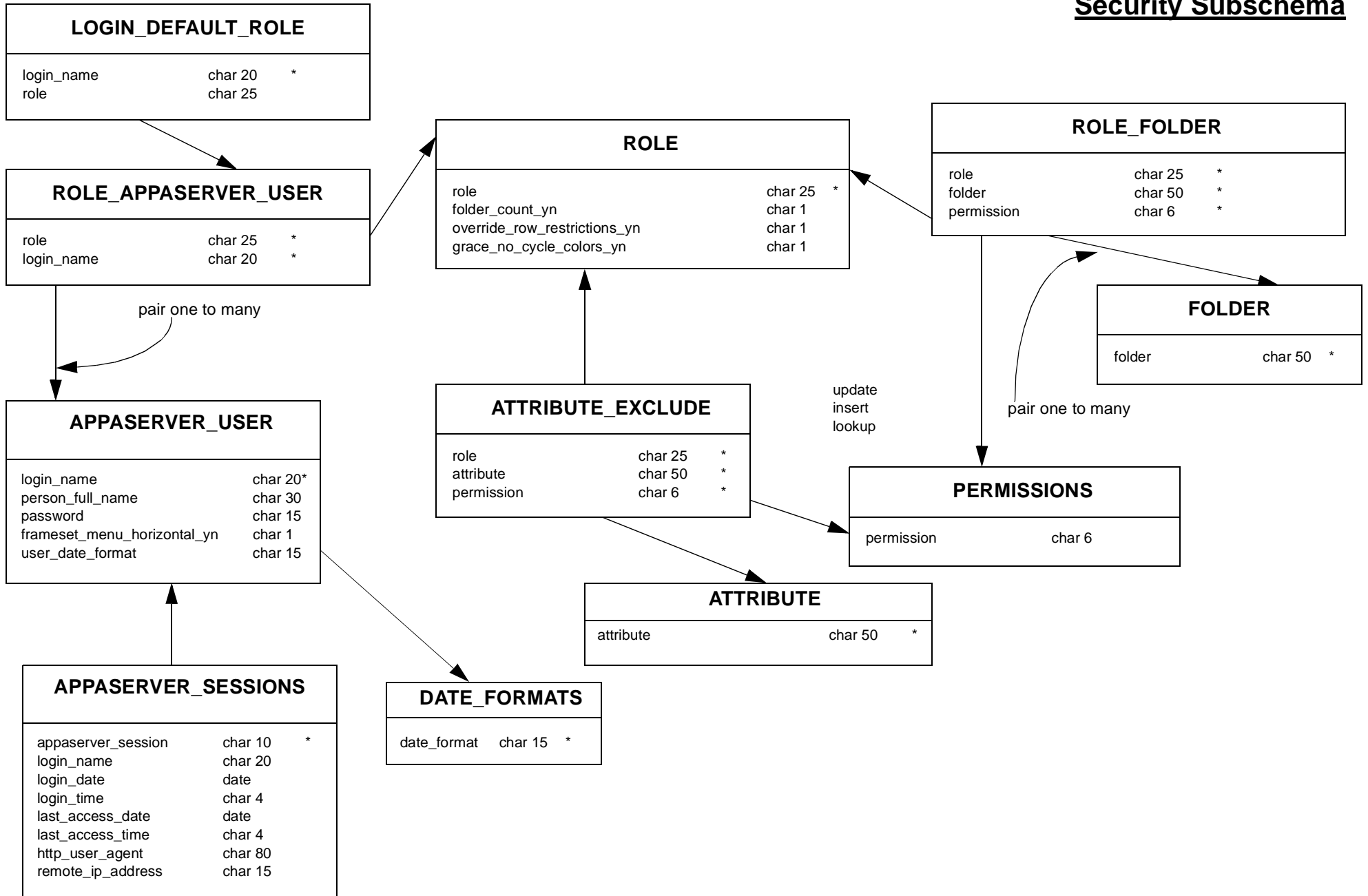


## Javascript Subschema



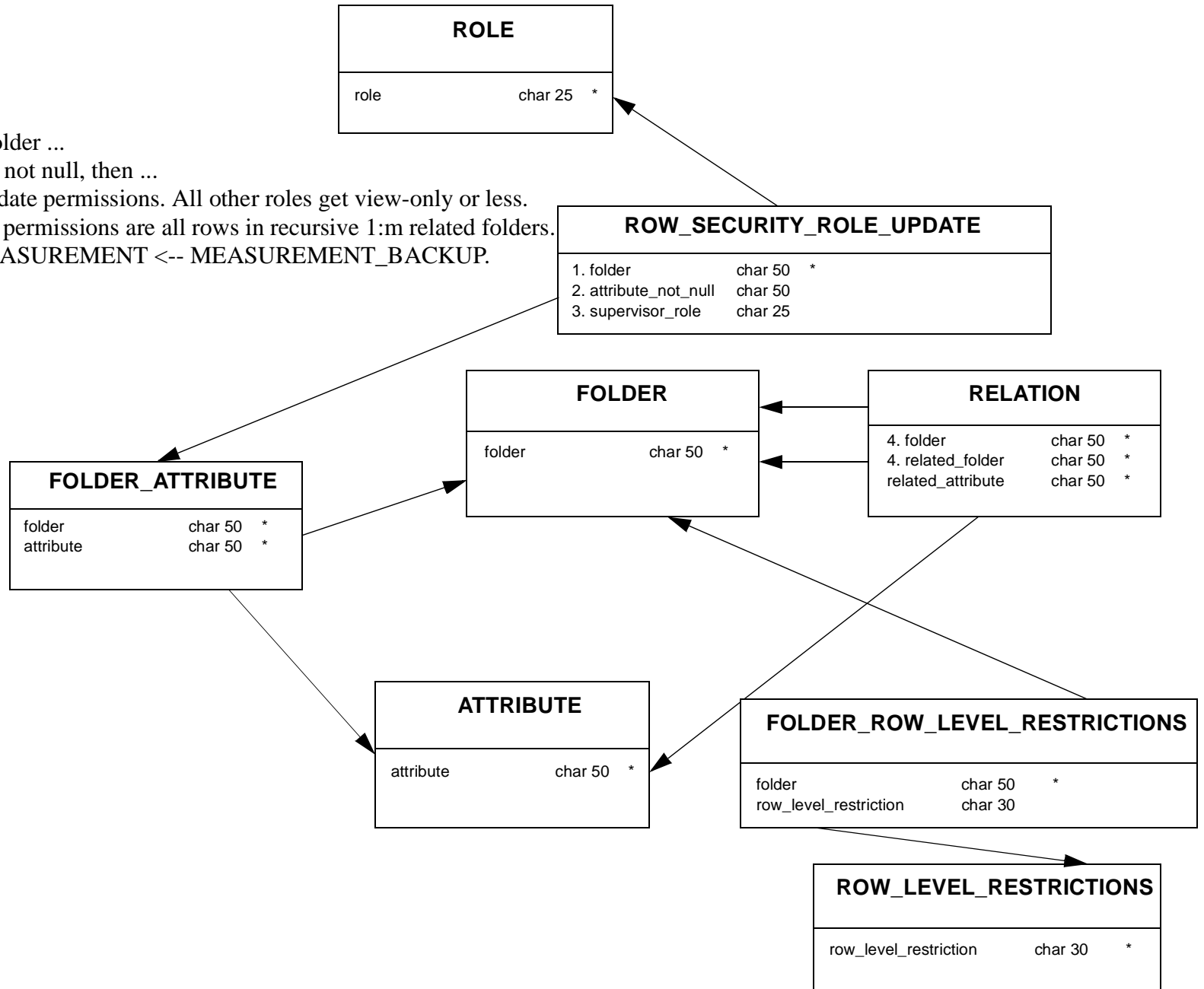
## Security Subschema



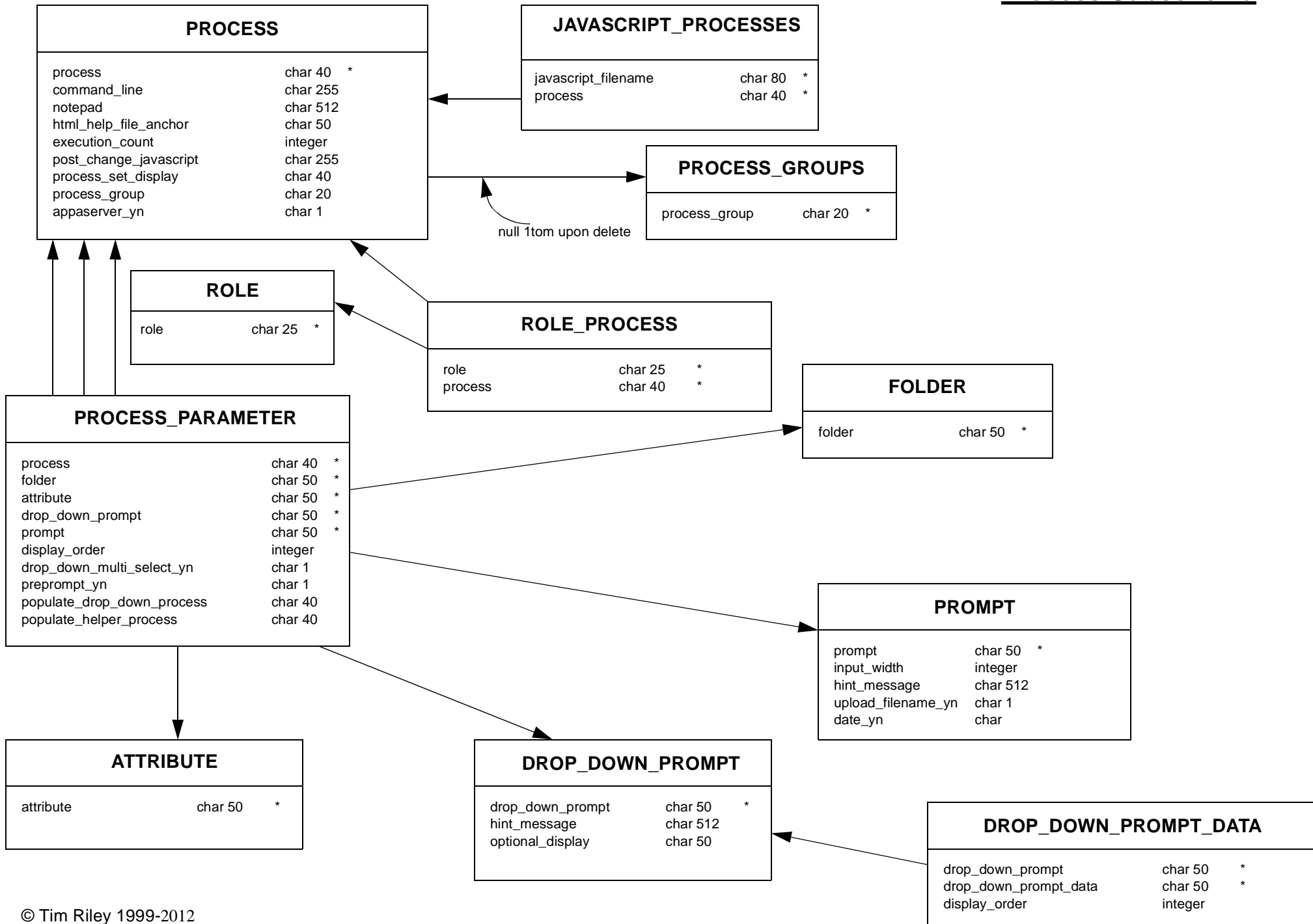
# Appaserver Database Schema

## Row Level Security Subschema

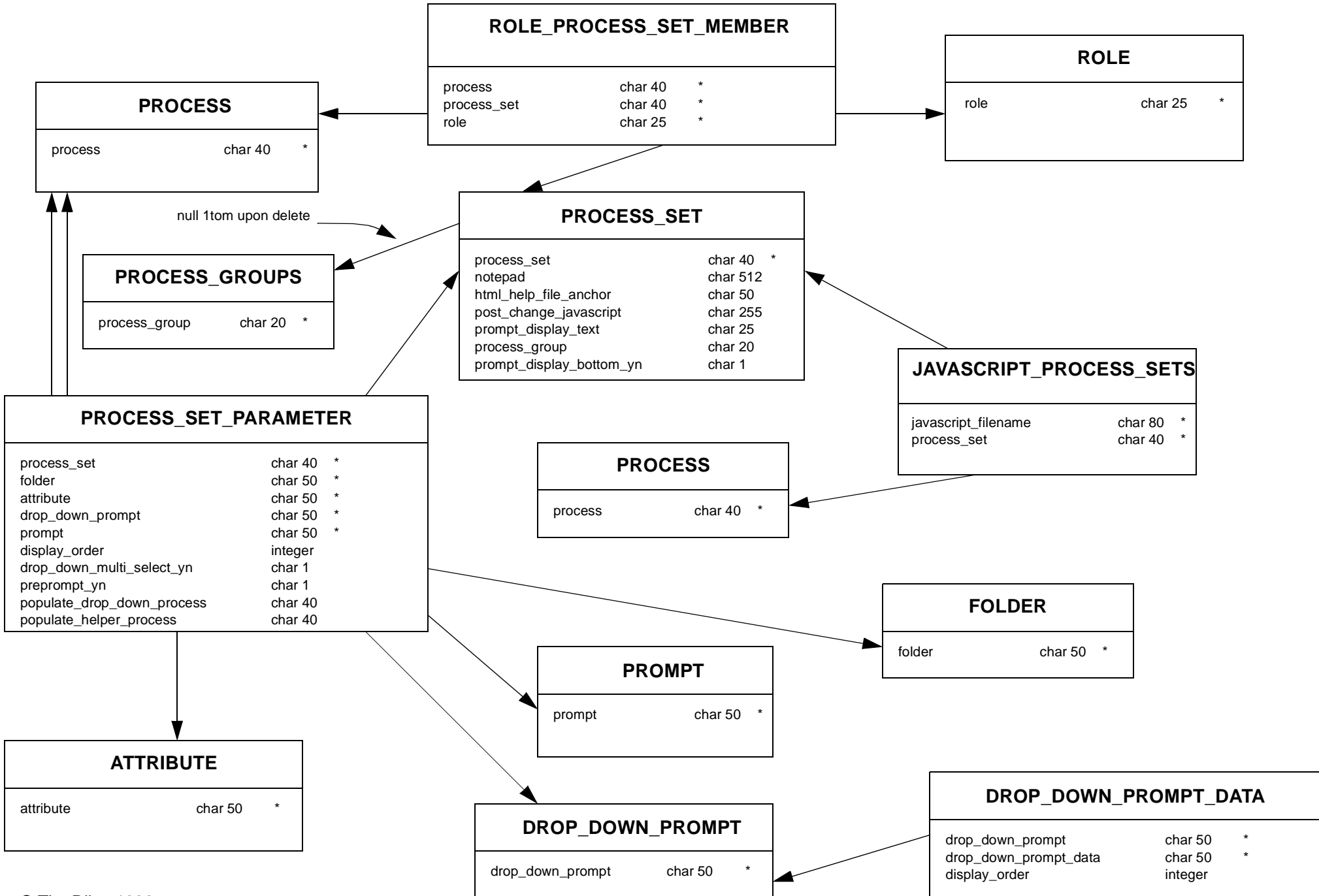
1. For every row in this folder ...
2. If this attribute value is not null, then ...
3. Only allow this role update permissions. All other roles get view-only or less.
4. Also getting view-only permissions are all rows in recursive 1:m related folders.  
See hydrology: MEASUREMENT <-- MEASUREMENT\_BACKUP.

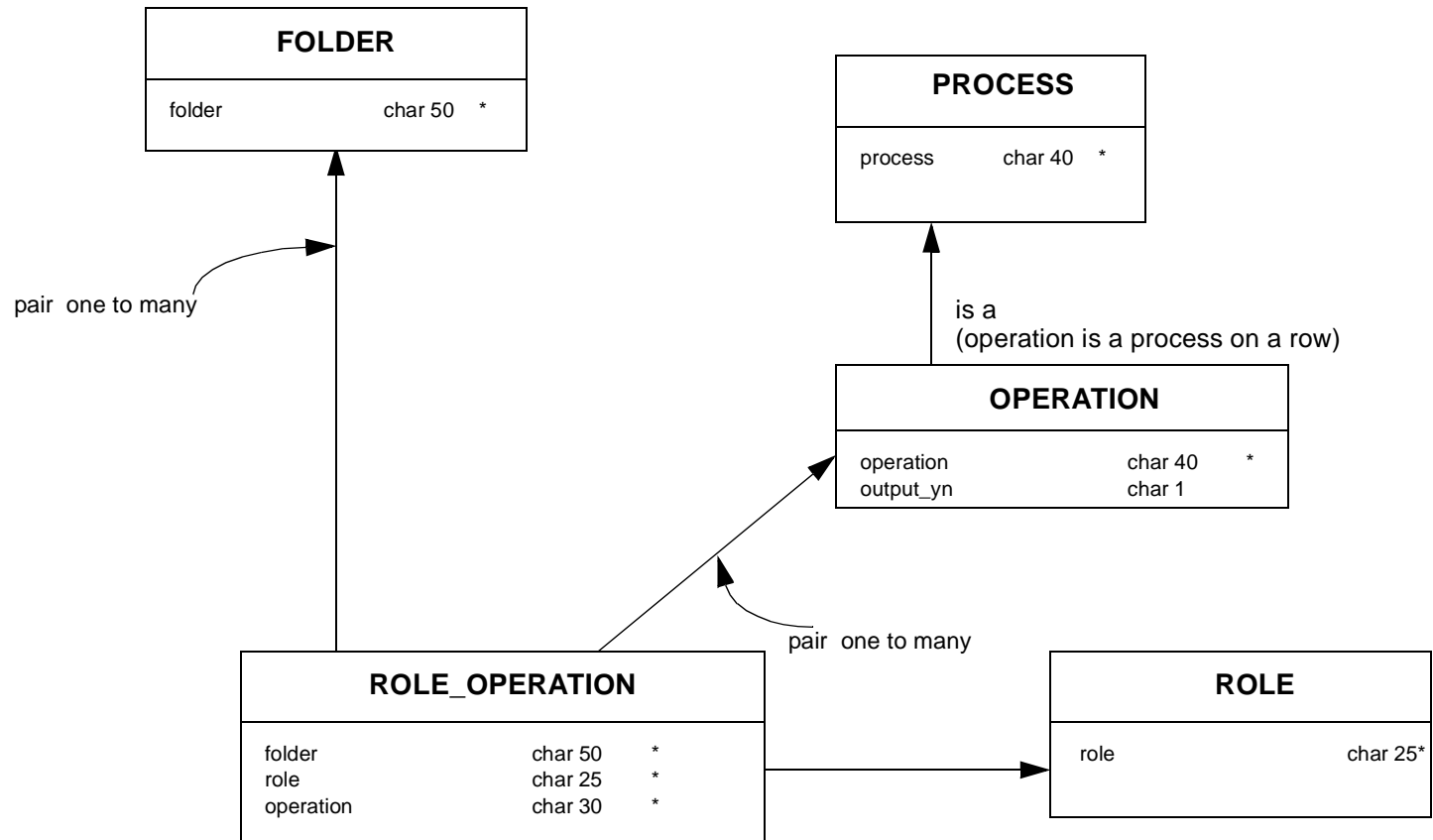


row\_level\_non\_owner\_view\_only  
row\_level\_non\_owner\_forbid

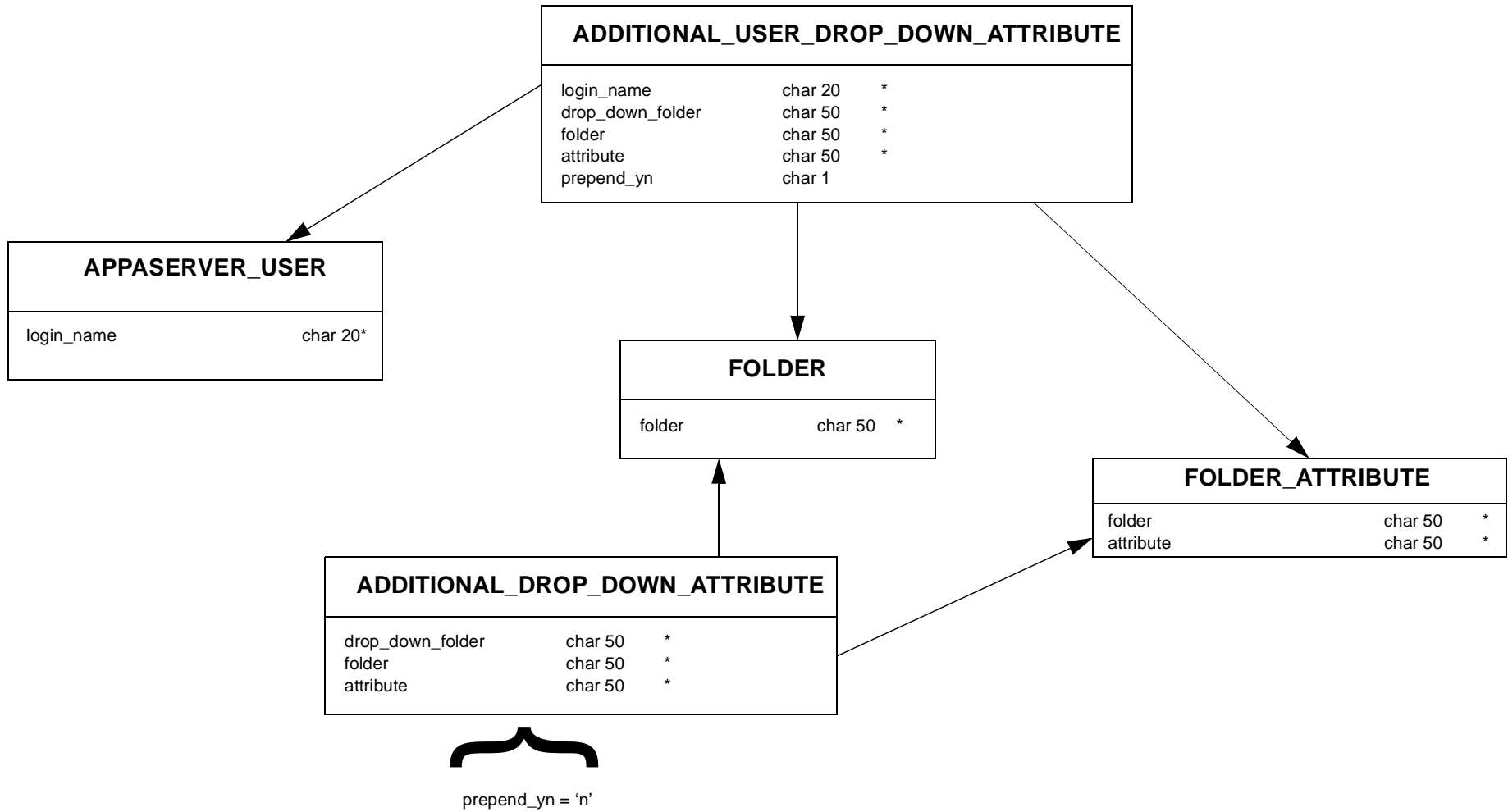


Process Set Subschema





## Additional Drop Down Attribute Subschema



**Process Generic Output Subschema**

